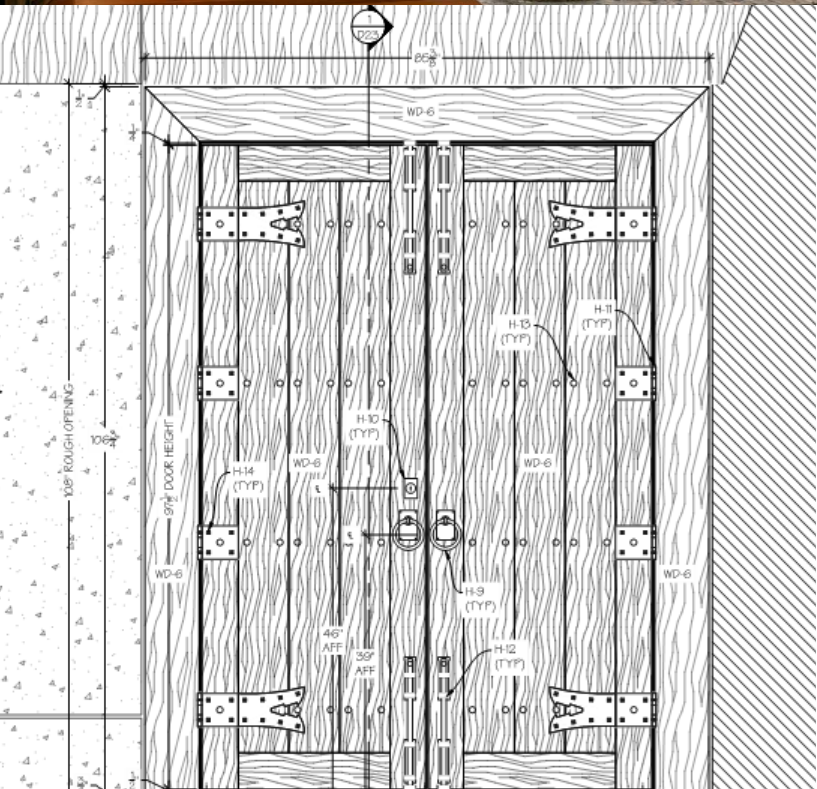


Strategic.

A detailed approach was required to transport patrons to a space that truly mimicked Japanese artistry and quality and led to a national award-winning project.



Making an entrance.

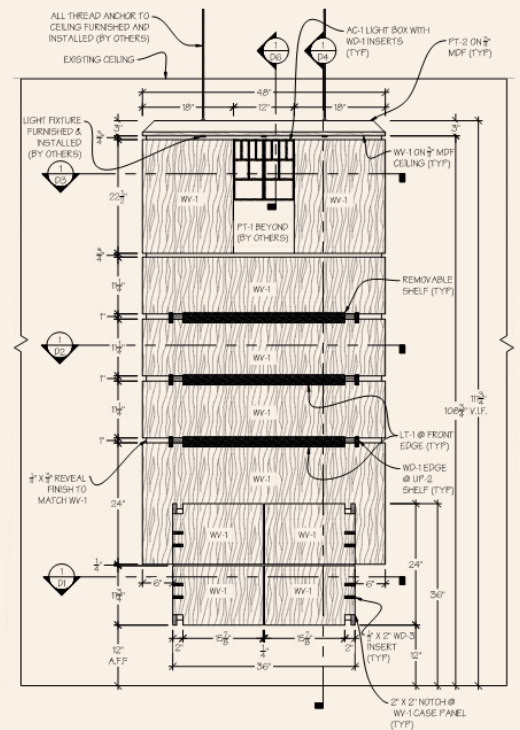
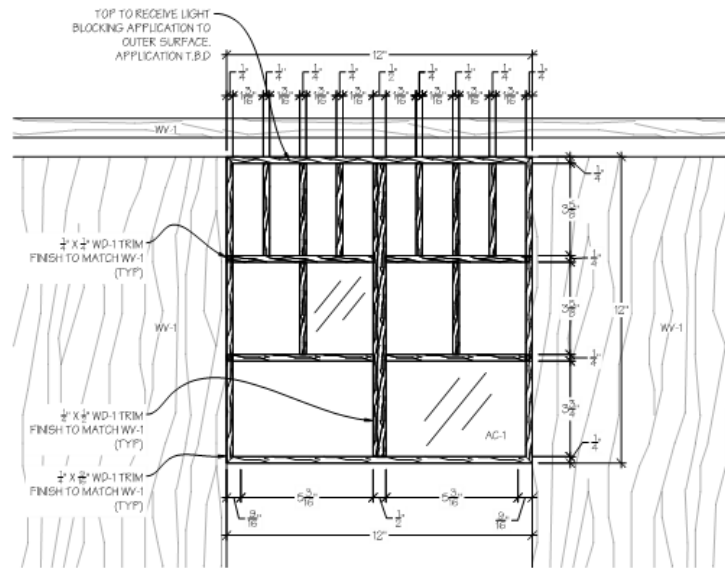
A strategically detailed approach was required to transport patrons to a space that truly mimicked Japanese artistry and quality and led to a national award-winning project. Traditional materials and design research helped us custom make: displays; ceilings; stone features; mock antique entry doors; custom cast hardware; a pergola; flooring; a hand-carved basalt water feature; and a feature wall with concealed door and lighting.

Quite a display.

The client needed a means to display their wares which encouraged a tactile experience. The displays had to be styled to compliment the space, easily approachable and integrate warm beautiful finishes. Spanish cedar veneer, quality leather, cleverly concealed edge lighting, unique powder coated hanging fixtures and an intricate Japanese inspired custom light fixture made for a very happy client.

I've had the good fortune to work with some of the most talented woodworkers on the planet, but honestly the experience working with Acacia has been one of the best."

JAMES O'NEILL
FOUNDING PRINCIPAL
INVENTURE



Focused on craft.

We take a focused approach to every project. You'll see our process and capabilities below.



1. Design development

- a. Aesthetic design and functionality collaboration
 - i. Detailing options
 - ii. Material options
 - iii. Technology integration
 - iv. Powered movement integration
 - v. Functional performance
 - vi. Durability
 - vii. Overall benefit and risk assessment
- b. Material sampling and testing
 - i. Aesthetic appeal
 - ii. Physical performance

2. Single source execution

- a. Assume complete responsibility for complicated designs usually involving multiple trades
- b. Develop complete designs for all components and materials
- c. Manufacture and install all items within scope

3. Real time and reliable scheduling for all contracted services

- a. Reliable dates for design deliverables
- b. Reliable dates for production deliverables
- c. Reliable dates for installation deliverables

4. Final design and submittal drawings

- a. Highly detailed design drawings
- b. Scaled layouts for site coordination
- c. Detailed schedules for materials, finishes, hardware, devices and equipment

5. Production Mock-Ups

6. Preemptive project site coordination

- a. Consistent and effective communication with project site stakeholders
- b. Relevant wall, floor and ceiling layouts verified early in project cycle
- c. Assistance with critical layouts relevant to millwork

7. Physical production

- a. Extremely high quality product and services
- b. Orders delivered by mutually designated order of importance
- c. Orders delivered complete per scheduled commitments

8. Installation

- a. Seamlessly coordinated receiving and staging of product on site
- b. Teams chosen based on qualification and trust
- c. Focused execution until complete
- d. Touch up and punch work completed immediately after initial installation
- e. Zero architectural punch list goal

9. Close out documentation and progress billings

- a. Thorough and accurate documentation using industry standard formats
- b. Timely and complete document distribution